



# Hysterectomy and cervical screening

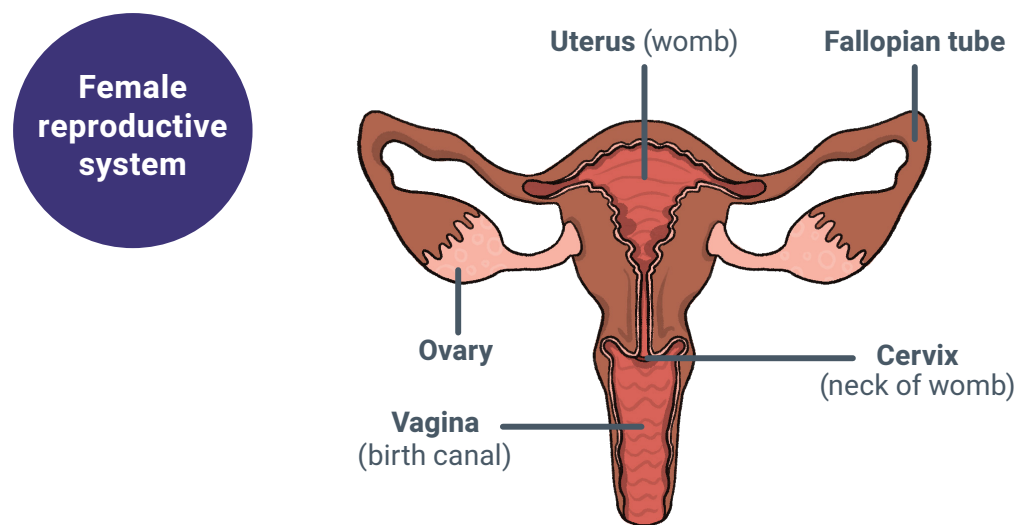


## What is a hysterectomy?

A hysterectomy is a surgical procedure where a woman's uterus (womb) is removed. It is a common type of elective surgery for Australian women, and there are many reasons why a woman may choose to have this procedure.

There are different types of hysterectomy, including:

- Subtotal/partial hysterectomy - removal of the body of the uterus, leaving the cervix in place
- Total hysterectomy - removal of the entire uterus, including the cervix



## Do I still need to continue cervical screening if I have had a hysterectomy?

If you have not had your cervix removed (subtotal/partial hysterectomy), you should continue to have regular cervical screening.

If you have had your cervix removed (total hysterectomy), you should consult with your doctor about your individual situation and whether you need to continue screening.

If you are unsure what type of hysterectomy you have had, discuss this with your doctor.

## What if I have had my cervix completely removed? (total hysterectomy)

There are many reasons why you may still be required to go for tests with your healthcare provider, including if you:

- Have not had a Cervical Screening Test before
- Had a hysterectomy as part of treatment for a high-grade cervical abnormality
- Had a cervical abnormality detected at the time of your hysterectomy
- Are currently under surveillance for a previous high-grade cervical abnormality.

Talk with your doctor or healthcare provider if you have any questions.



**For more information call (08) 6458 1740  
or email the WA Cervical Cancer Prevention Program at  
[cervicalscreening@health.wa.gov.au](mailto:cervicalscreening@health.wa.gov.au)**

**To update your contact details or check when your next  
Cervical Screening Test is due, you can call the  
National Cancer Screening Register on 1800 627 701.**



We are proud to be a smoke-free site.  
Thank you for not smoking or vaping in  
any buildings or on our grounds.

This document can be made available in  
alternative formats on request.